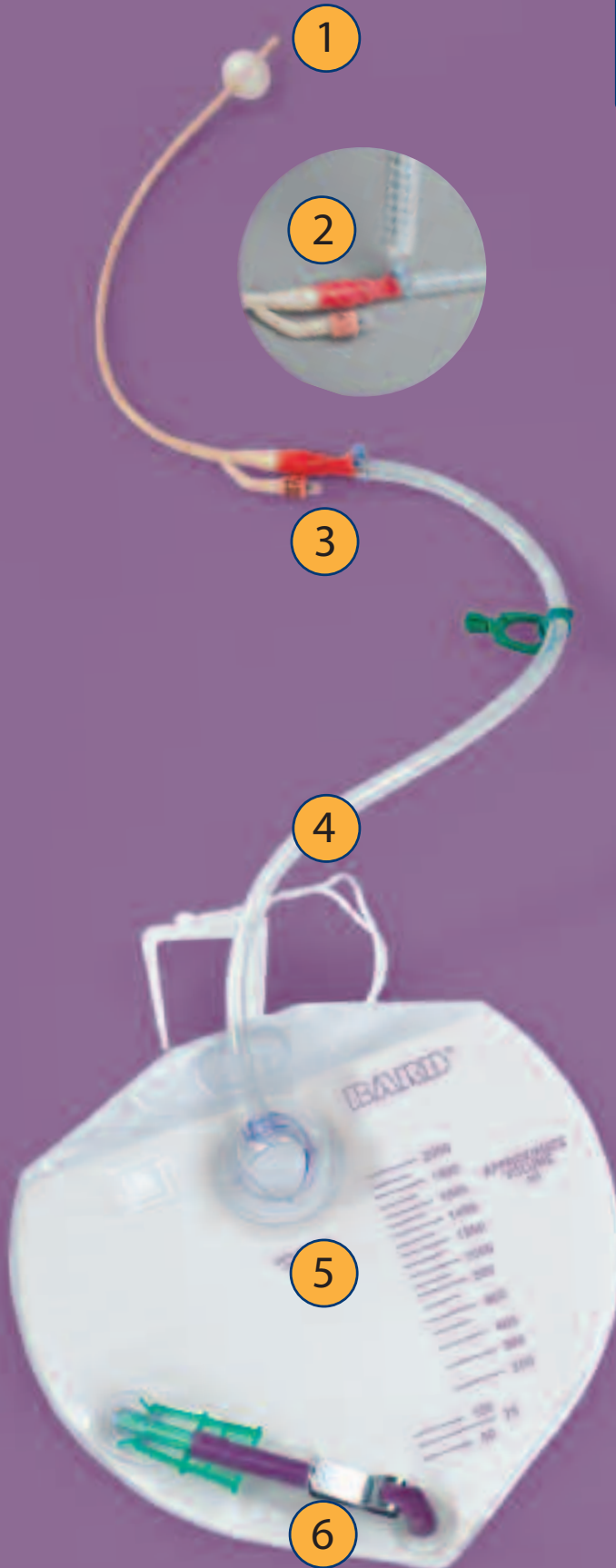


BARDEX® I.C. Complete Care®

Infection Control Foley Catheter* System

Six Point Prevention

To improve the safety of both patients and caregivers, the Bardex® I.C. Complete Care® System offers complete infection control technology.



1
Bardex® I.C.
Anti-Infective
Foley Catheter

2
EZ-Lok®
Sampling Port

3
Tamper-Evident
Seal

4
Bacteriostatic
Drainage Tube

5
Bacteriostatic
Collection Bag

6
Microbicidal
Outlet Tube

Six Point Prevention

1 Anti-Infective Catheter

Pathogens may gain access to the bladder via extraluminal and intraluminal migration along the surface of the indwelling urinary catheter. The Bardex® I.C. Foley Catheter with Bacti-Guard®* silver alloy coating and Bard® Hydrogel is clinically proven to reduce catheter associated urinary tract infections (CAUTIs).

2 Sampling Port

To meet the requirements of the Needlestick Safety and Prevention Act, the Occupational Safety and Health Administration (OSHA) issued a set of safety standards for healthcare professionals to reduce the risk of needlesticks in the workplace. The needle-free EZ-Lok® Sampling Port is primary prevention for eliminating the risk of needlestick injury during urine sampling.

Connection

3 Violations of the closed urine drainage system have been well-documented to predispose patients to infection. Bard's Tamper-Evident Seal minimizes the risk of system contamination. The seal provides a clear indication of system opening and serves as a reminder to caregivers to keep the system closed.

Drainage

4 Intraluminal contamination occurs by reflux of micro-organisms gaining access to the catheter lumen from failure of closed drainage or contamination of urine in the collection bag. The bacteriostatic drainage tubing in the Bardex® I.C. Complete Care® System contains a unique antimicrobial agent that repels many common Gram-positive bacteria, Gram-negative bacteria, and yeasts.

Collection

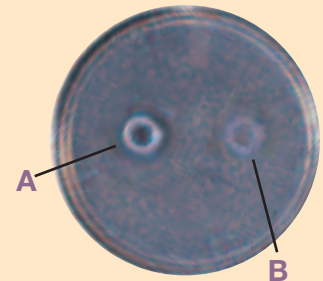
5 Bacteria in the collection bag can migrate against the flow of urine to infect the bladder within one or two days after first appearing in the collection bag. The bacteriostatic collection bag in the Bardex® I.C. Complete Care® System is impregnated with a novel antimicrobial agent that resists pathogens commonly associated with CAUTIs.

Outlet

6 Attention should be directed to the outflow spigot to reduce the chance of infection. The microbicidal outlet tube in the Bardex® I.C. Complete Care® System creates a zone of inhibition against the most common organisms that put a patient at risk and protects against retrograde bacterial migration.

DRAINAGE AND COLLECTION

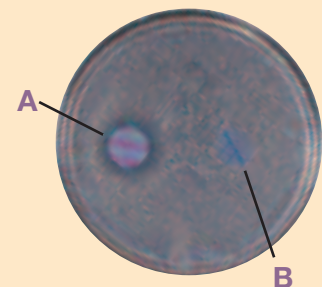
CAUTI pathogen reduction with the Complete Care® Bacteriostatic Collection Bag materials.



Repels Candida albicans

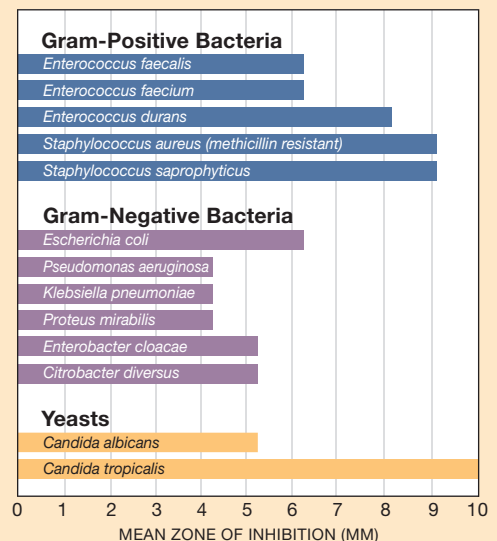
A. Complete Care® Bacteriostatic Collection System Materials

B. Conventional Collection Materials



OUTLET

Zone of bacterial inhibition created by the Complete Care® Microbicidal Outlet Tube.



All testing employed the agar diffusion method. Standard collection bag outlet tubes showed no zones for all test organisms.

Please consult product label and insert for any indications, contraindications, hazards, warnings, cautions and directions for use.

* The Foley catheters included in the Bardex® I.C. System contain Bacti-Guard® silver alloy coating licensed from Bactiguard AB. Bacti-Guard is a registered trademark of Bactiguard AB.

Bard, Bardex, EZ-Lok and Complete Care are registered trademarks of C.R. Bard, Inc. or an affiliate.

©2005 C.R. Bard, Inc., All rights reserved.

0512-19 R12/05 HIM P01/06 10M